



# **AR INDUSTRIES**

**OUTDOOR PLAY EQUIPMENT**

**OFFICE ADDRESS- PLOT NO. 79A STREET NO.3 GURUKUL INDUSTRIAL AREA  
FARIDABAD HARYANA, 121001**

**Contact No - 9899900180 , 9999046054**

**E-mail ID - shyamsngl@gmail.com**

# OUTDOOR PLAY EQUIPMENT



## PRODUCT CATALOGUE



**AR INDUSTRIES**

FARIDABAD, HARYANA



PRODUCT CATALOGUE



# COMPANY PROFILE



Established in the year 2004, AR Industries has grown into a major name in the field of open air outdoor gym equipment and children playing equipment. At this time AR Industries has more than 100 kinds of outdoor gym Equipment and 40 kinds of children playing equipment for parks. AR Industries products are used in community parks, kindergarden, schools, amusement parks, societies & communities. AR Industries prides itself in being a professional and technical manufacturer.

AR Industries group has built a large manufacturing facility. The factory has a new product development center, a product design center, a marketing center, research & development center, quality & supervision center.

The company has been committed in introducing the most advance production Equipment and manufacturing technology for many years, and only uses the highest quality of raw materials in the segment for producing its product. The quality of AR Industries' products has been in the forefront of the industry from many years.

AR Industries staff hold the tenets of integrity, innovation, practical and efficient manufacturing in order to realize the potential of becoming one of the most prominent brands in the country.



We have Installed Gym & Play Equipment in over 1000+ sites including South Delhi Municipal Corporation, North Delhi Municipal Corporation, East Delhi Municipal Corporation, Jaipur, Ganganagar, Gurugram, Faridabad, Panipat, Karnal etc. Company also has presence in Mumbai, Raipur, Bangalore, Jabalpur & 50+ cities across the country.



# BUSINESS INFOGRAPHIC



## VISION

Company has a vision to provide the most advanced Outdoor Gym Equipment for everyone to Ensure a Healthy & Pro-active Society. We are introducing Low cost, Low maintenance & Safe Equipment for community parks kids in schools.



## MISSION

AR Industries' prime goal is to reach every corner in all directions with a motive to serve the society. The company is eyeing to deliver 25000 Gym Play Equipment in coming year.

## VALUES

The Organization is fully committed to match the world standards in customer satisfaction, quality of the product, value for money, Delivering what promised in a specific given time. Our dedication to give more will never fade away. The company has a tag line "GIVE YOUR BEST, ENJOY THE REST".

# OUR CERTIFICATIONS -



At present, AR Industries group is a certified member of  
ISO 9001 : 2015 (Quality Management System).  
ISO 14001 : 2015 (Environmental Management System).  
MSME Certified.  
GeM (Govt. E-Market Place) Certified.



## QUALITY POLICY -



AR INDUSTRIES Manufacturing Outdoor Gym Equipment has Quality Policy committing to, Achieve “TOTAL CUSTOMER SATISFACTION” by providing BEST QUALITY of service both in Quality & Delivery by meeting or exceeding customer expectation through complying with all applicable requirements and continual improvement of the Quality Management System with respect to context of the organization and its strategic direction.

Our products & services shall be of the Highest Quality available in the market place.



**MSME**

MICRO, SMALL & MEDIUM ENTERPRISES

सूक्ष्म, लघु एवं मध्यम उद्यम

OUR STRENGTH • हमारी शक्ति

Ministry of MSME, Govt. of India

# DIRECTORY

## PLAY EQUIPMENT

1. 3-DECK MPPS.
2. 4-DECK MPPS.
3. 3-HEX DECK MPPS.
4. 2-HEX DECK ROTO MPPS.
5. 3-DECK ROTO MPPS.
6. WALL-HOLLA.
7. a) CROSS & ZERO.  
b) DUCK RIDER.
8. a) BRIDGE LADDER  
b) LOOP RUNG.
9. CAMEL BACK CLIMBER.
10. CLIMBER.
11. ORBIT CLIMBER.
12. HORIZONTAL BAR.
13. a) SINGLE SEE-SAW.  
b) DOUBLE SEE-SAW.
14. a) STRAIGHT SLIDE.  
b) WAVE SLIDE.
15. a) MERRY-GO-AROUND.  
b) SPIRAL SLIDE.
16. a) MUSICAL INSTRUMENTS.  
b) ARC SWING.

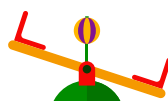
## GYM EQUIPMENT

1. CHEST PRESS.
2. SKY WALKER.
3. SEATED PULLER.
4. CROSS TRAINER.
5. SIT-UP-BOARD.
- 6- DOUBLE STANDING TWISTER.
- 7- SURF BOARD.
- 8- SHOULDER BUILDER.
- 9- ARM PADDLE BIKE.
- 10- BACK EXTENSION.
- 11- AIR WALKER.
- 12- HORSE RIDER.
- 13- TAICHI 2in1.
- 14- SEATING STANDING TWISTER.
- 15- ROWER.
- 16- DOUBLE SEATING TWISTER.
- 17- STAIR CUM STEPPER.
- 18- TRIPLE STANDING TWISTER.

## PORTABLE TOILETS

- 1- CUBOIDAL DESIGN PORTABLE (3'6" X 3'6").
- 2- 2in1 PORTABLE TOILET.
- 3- CUBOIDAL DESIGN PORTABLE (3' X 3').
- 4- 10 SEATER FRP MOBILE TOILET.
- 5- 6 SEATER FRP MOBILE TOILET.
- 6- 10 SEATER STATIONARY.
- 7- FRP TANKS.

**CHILDREN**  
PLAYGROUND

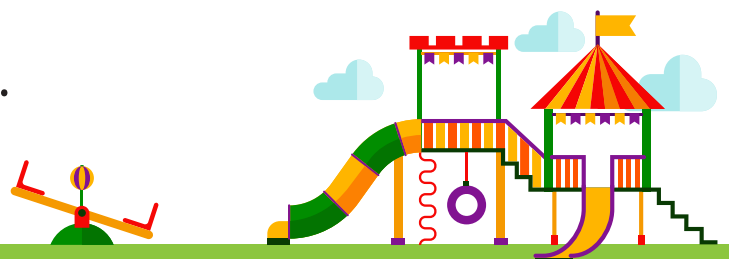


# 3-DECK MPPS



## IT INCLUDES-

- \* CONSIST OF 3 FRP DECKS.
- \* 2 WAVE SLIDE.
- \* 1 STRAIGHT SLIDE.
- \* 1 ROPE CLIMBER.
- \* 1 TUNNEL.
- \* 1 SPIRAL SLIDE.
- \* 1 LADDER.
- \* 1 CONNECTING PLATFORM.





# 4-DECK MPPS

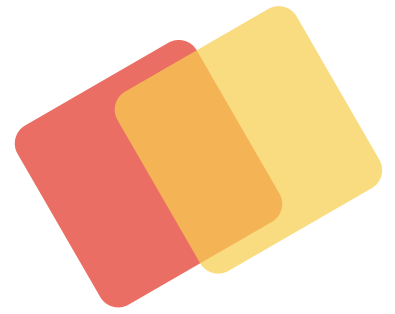


## IT INCLUDES-

- \* CONSIST OF 4 FRP DECKS.
- \* 1 MINI SLIDE.
- \* 1 STRAIGHT SLIDE.
- \* 1 ROPE CLIMBER.
- \* 1 TUNNEL.
- \* 1 SPIRAL SLIDE.
- \* 2 LADDER.
- \* 1 CONNECTING BRIDGE.
- \* 1 ROCK CLIMBER
- \* 1 CONNECTING PLATFORM



## 3-HEX DECK MPPS

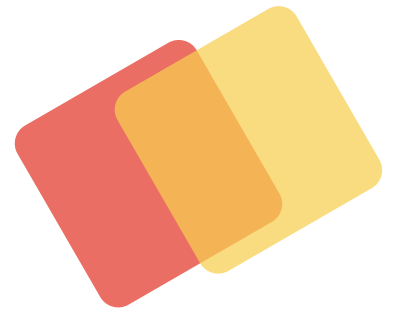


### IT INCLUDES-

- \* CONSIST OF 3 FRP HEX DECKS.
- \* 1 BUBBLE PANEL.
- \* 1 TACTILE PANEL.
- \* 1 FRP LADDER.
- \* 1 SPIRAL SLIDE.
- \* 1 ROLLER SLIDE.
- \* 1 TUNNEL.
- \* 1 LOLLIPOP
- \* 1 ROPE CLIMBER
- \* 1 WAVE SLIDE.
- \* 1 CONNECTING PLATFORM.

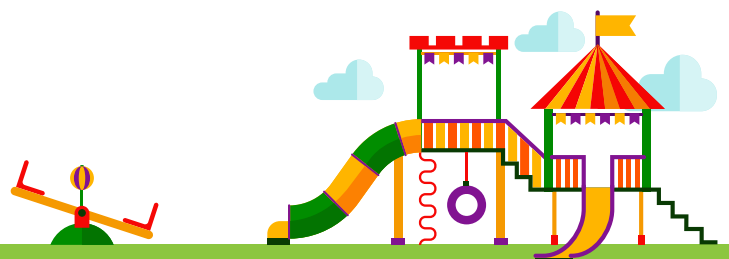


## 2-HEX DECK ROTO MPPS



### IT INCLUDES-

- \* CONSIST OF 2 ROTOMOULD HEX DECKS.
- \* 1 BUBBLE PANEL.
- \* 1 TACTILE PANEL.
- \* 1 ROTO STAIRS.
- \* 1 SPIRAL SLIDE.
- \* 1 DOUBLE WAVE SLIDE.
- \* 1 LOLLIPOP
- \* 1 ROCK CLIMBER
- \* 1 MINI SLIDE.
- \* 1 CONNECTING PLATFORM.
- \* 1 LOOP RING.



## 3-DECK ROTO MPPS



### IT INCLUDES-

- \* CONSIST OF 3 ROTOMOULD DECKS.
- \* 2 BUBBLE PANEL.
- \* 1 TACTILE PANEL.
- \* 1 DOUBLE WAVE SLIDE.
- \* 1 TUNNEL.
- \* 1 ROCK CLIMBER.
- \* 1 SPIRAL SLIDE.
- \* 1 ROTO LADDER.



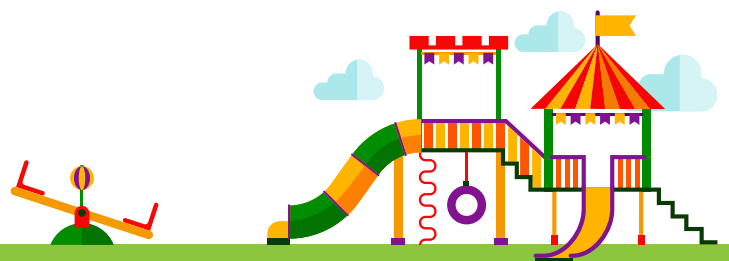
# WALLHOLLA

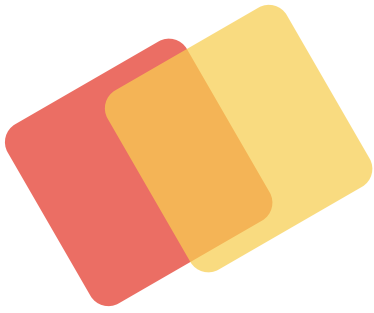


# CROSS & ZERO



# DUCK RIDER

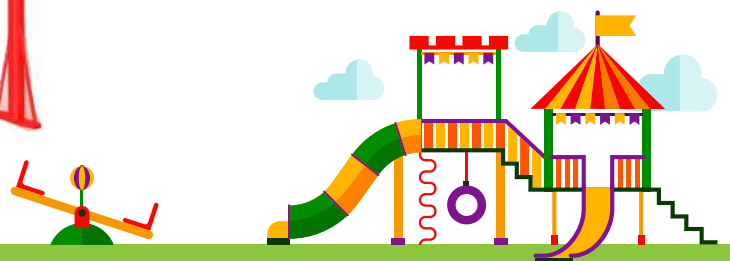
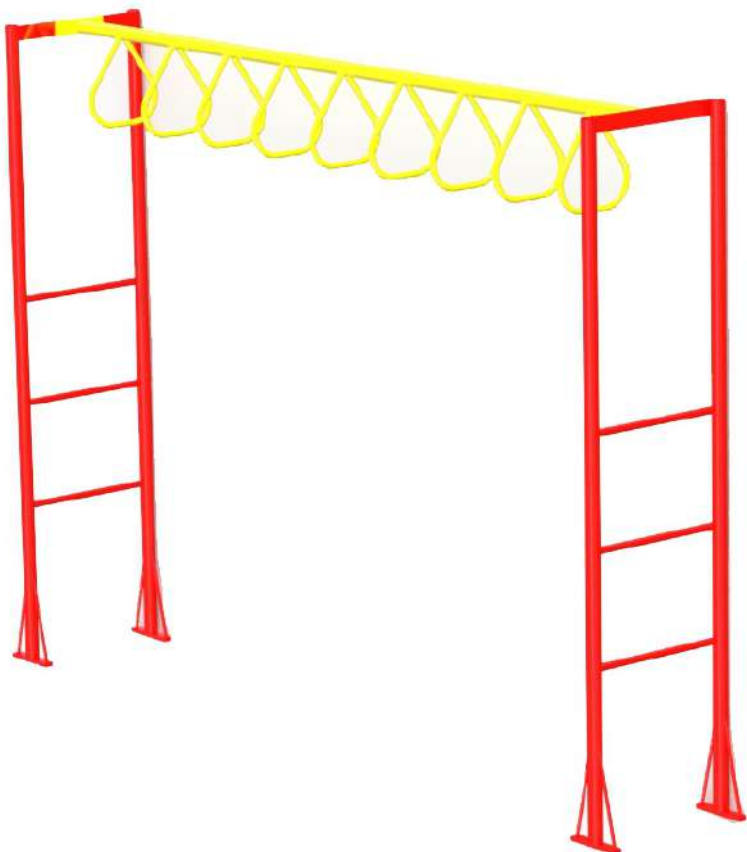




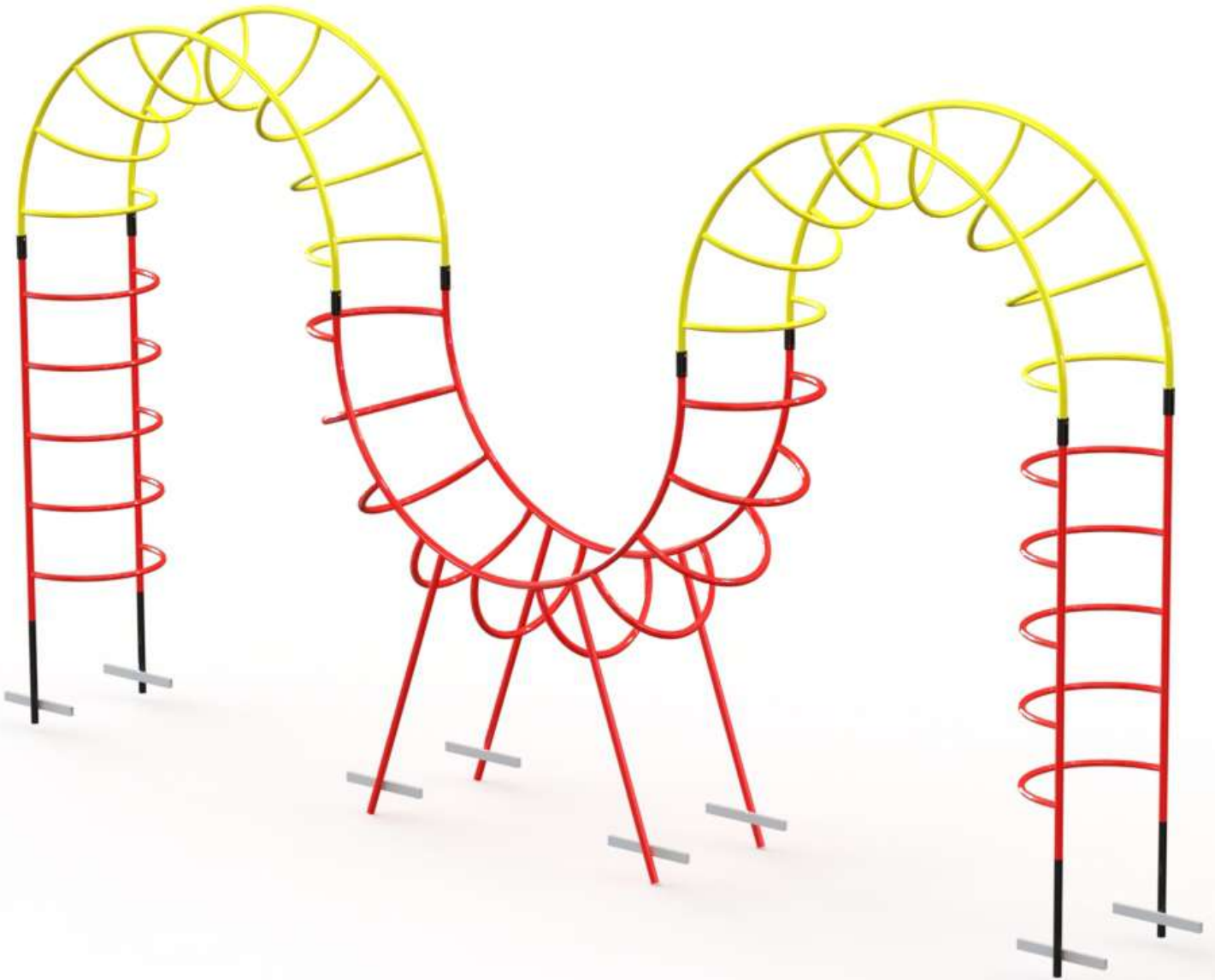
# BRIDGE LADDER



# LOOP RUNG



# CAMEL BACK CLIMBER

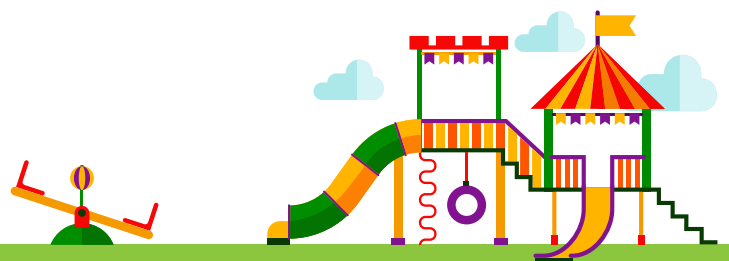
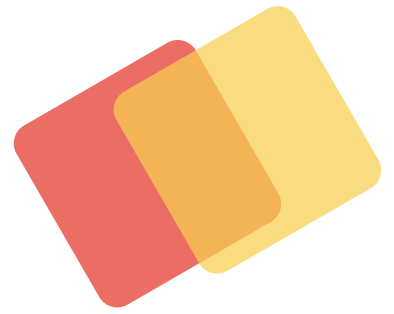




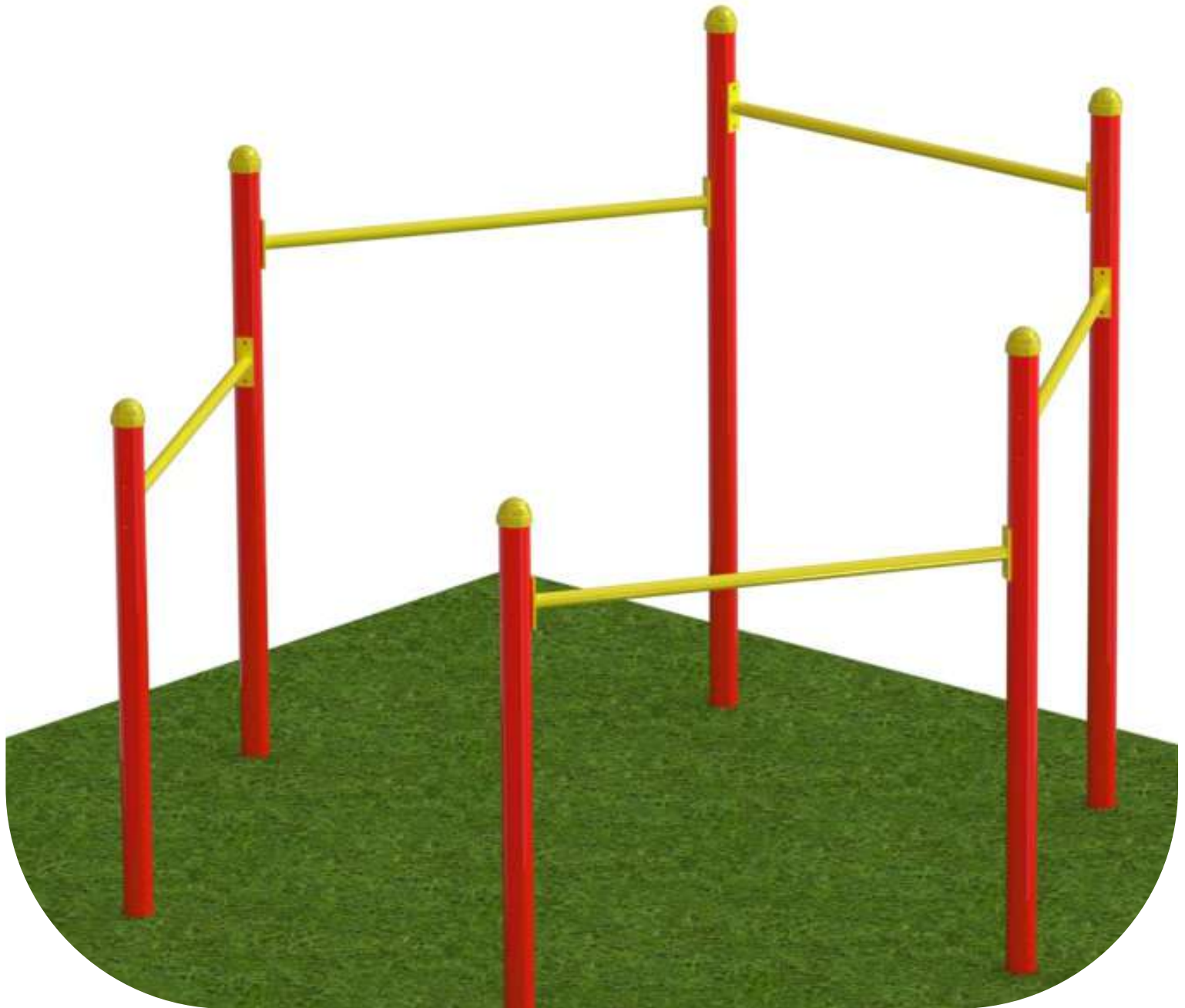
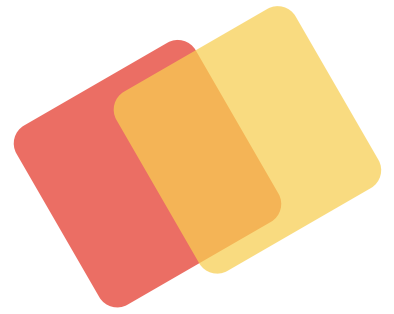
# CLIMBER



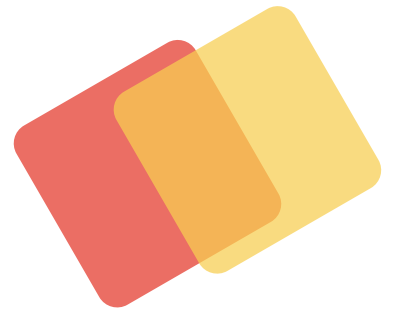
# ORBIT CLIMBER



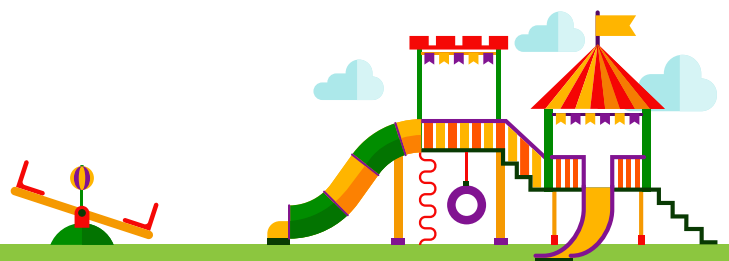
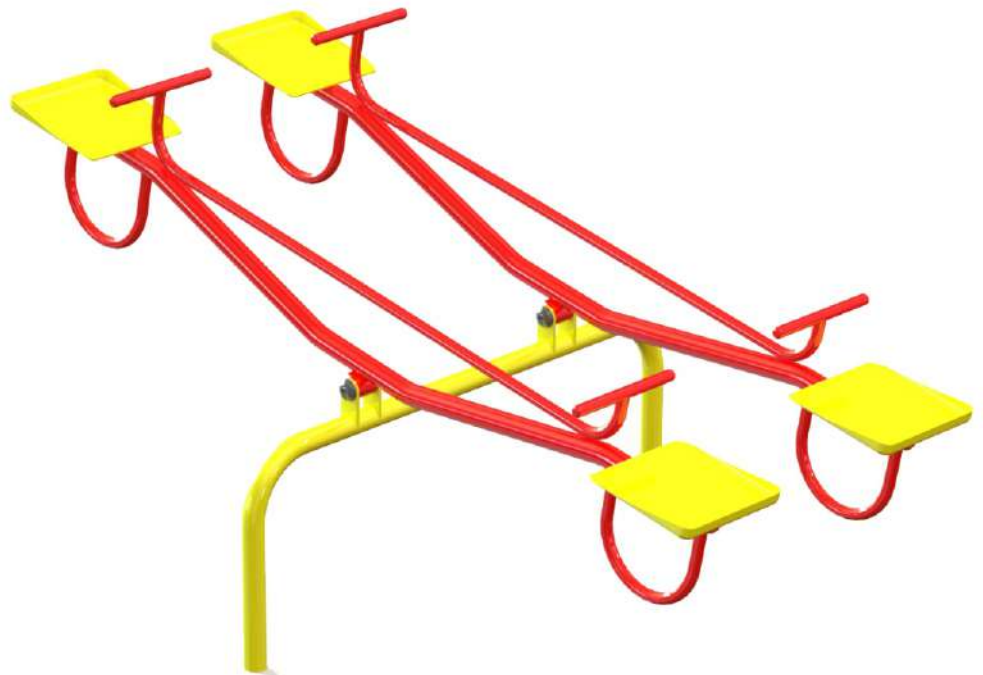
# HORIZONTAL BAR



# SINGLE SEE-SAW



# DOUBLE SEE-SAW



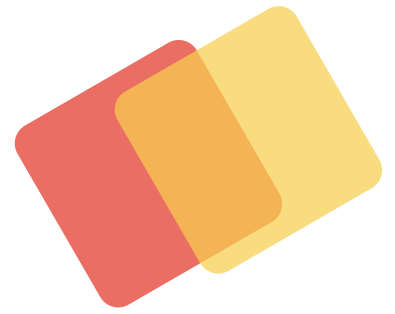
# STRAIGHT SLIDE



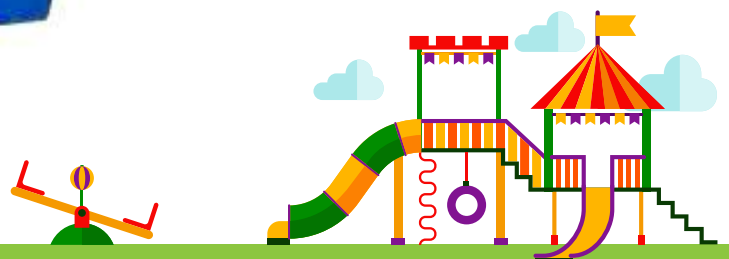
# WAVE SLIDE



# MERRY-GO-ROUND



# SPIRAL SLIDE

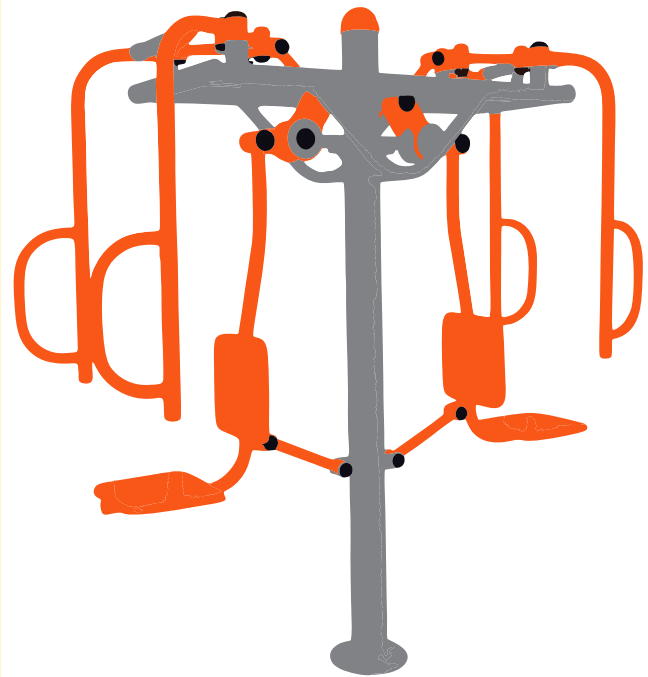


# MUSICAL INSTRUMENTS



# ARC SWING





# OUTDOOR GYM EQUIPMENT







# AR INDUSTRIES



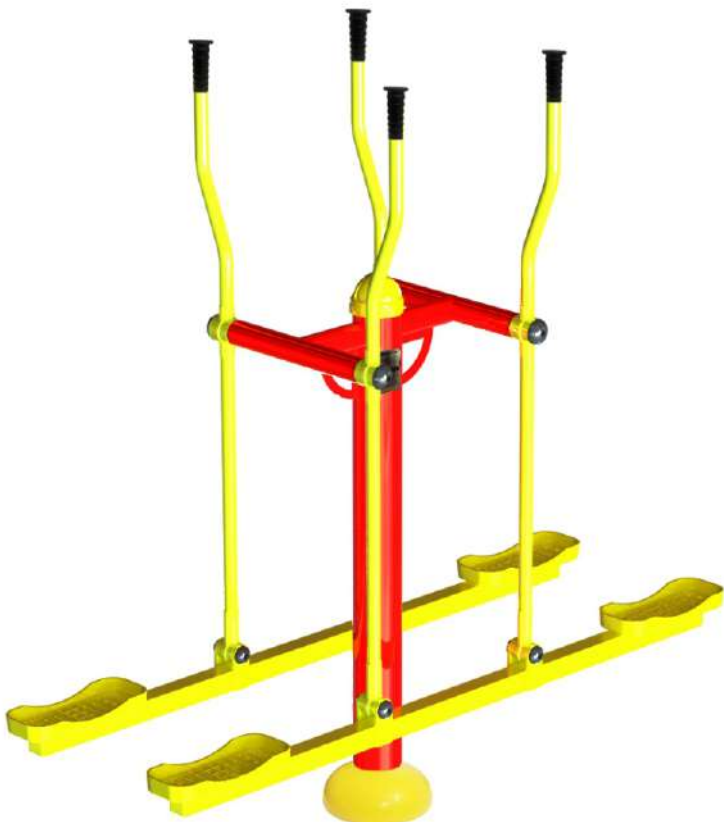


## CHEST PRESS

### STRENGTHENS

- a) - UPPER LIMBS.
- b) - CHEST MUSCLE.
- c) - BACK MUSCLES.

CODE- ARE/CP/201



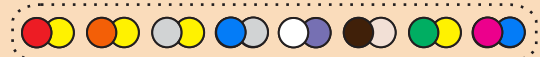
## SKY WALKER

### STRENGTHENS-

- a) - UPPER BODY MUSCLES.
- b) - LOWER BODY MUSCLES
- c) - IMPROVES JOINT FLEXIBILITY

CODE- ARE/SW/202

COLOR  
AVAILABILITY





## SEATED PULLER

### STRENGTHENS-

- a) - SHOULDER MUSCLE.
- b) - ARM MUSCLE.
- c) - BACK MUSCLES.

CODE- ARE/SP/203



## CROSS TRAINER

### STRENGTHENS-

- a) - IMPROVES  
CARDIOVASCULAR FITNESS.
- b) - BUILD STRENGTH IN BODY
- c) - TONE MUSCLES

CODE- ARE/CT/204

COLOR  
AVAILABILITY



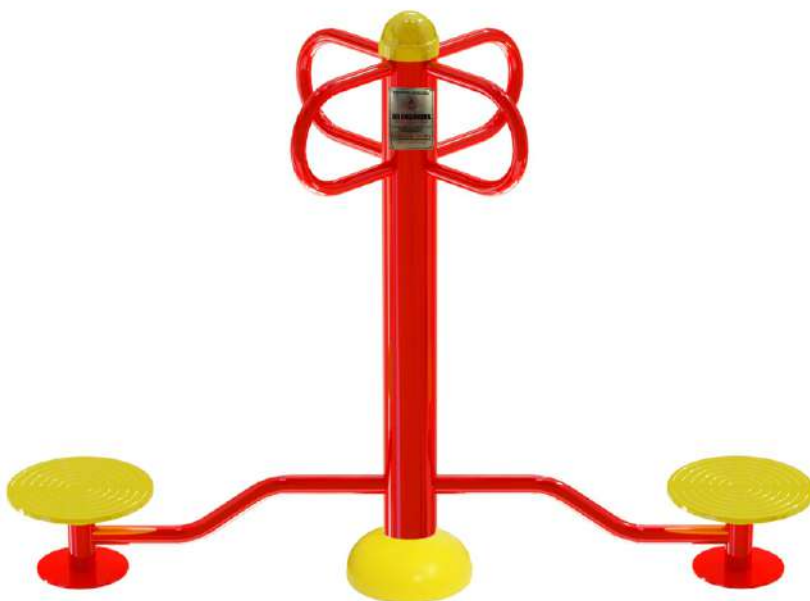


## SIT-UP BOARD

### STRENGTHENS-

- a) - THIGH MUSCLES.
- b) - WAIST MUSCLES.
- c) - ABDOMINAL MUSCLES.

CODE- ARE/SUB/205



## DOUBLE STANDING TWISTER

### STRENGTHENS-

- a) - LOWER BACK.
- b) - LOWER ABDOMINAL MUSCLE.
- c) - SIDE WAIST MUSCLES.

CODE- ARE/S&S/206

COLOR  
AVAILABILITY





## SURF BOARD

### STRENGTHENS-

- a) - FORE ARM MUSCLE
- b) - WAIST MUSCLES
- c) - LOWER BODY MUSCLE.

CODE- ARE/SB/207



## SHOULDER BUILDER

### STRENGTHENS-

- a) - ARM MUSCLES.
- b) - SHOULDER MUSCLES.
- c) - SHRUG MUSCLE.

CODE- ARE/SHB/208

COLOR  
AVAILABILITY





## ARM BIKE PADDLE

### STRENGTHENS-

- a) - THIGH MUSCLES.
- b) - WAIST MUSCLES.
- c) - LEG MUSCLES.

CODE- ARE/ABP/209

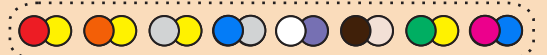
## BACK EXTENSION

### STRENGTHENS-

- a) - LOWER BACK.
- b) - LOWER ABDOMINAL MUSCLE.
- c) - LOWER BODY MUSCLES.

CODE- ARE/BX/210

COLOR  
AVAILABILITY





## AIR WALKER

### STRENGTHENS-

- a) - THIGH MUSCLES.
- b) - GLUTES MUSCLES.
- c) - LOWER LEG MUSCLES.

CODE- ARE/AW/211



## HORSE RIDER

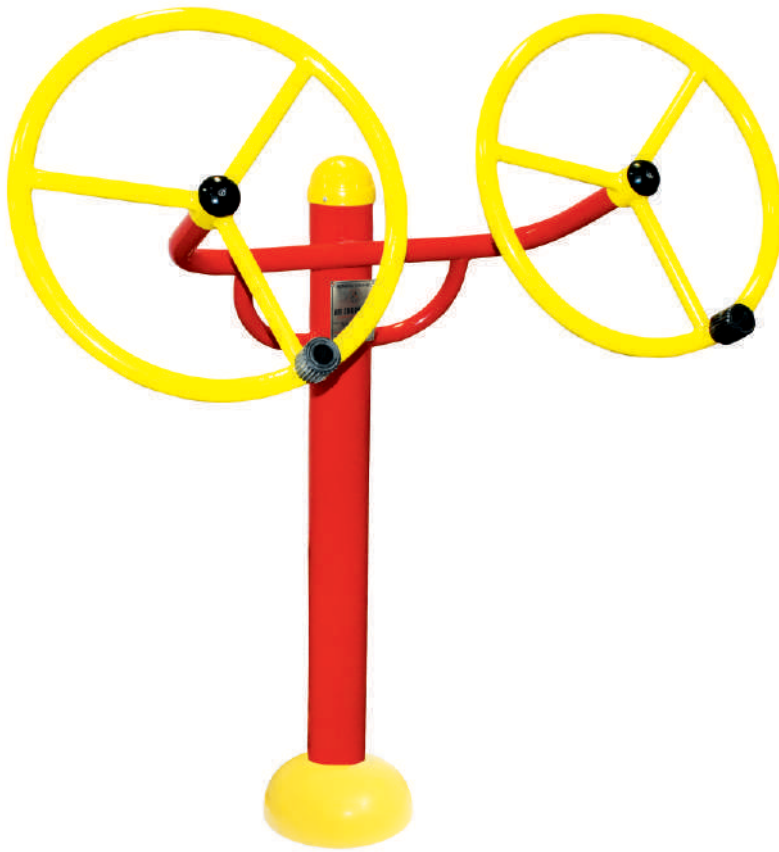
### STRENGTHENS-

- a) - FORE ARM MUSCLES
- b) - CORE MUSCLE.
- c) - LOWER BODY MUSCLES.

CODE- ARE/HR/212

COLOR  
AVAILABILITY





## TAICHI SPINNER

### STRENGTHENS-

- a) - ARM MUSCLES.
- b) - SHOULDER MUSCLES.
- c) - SHRUG MUSCLE.

CODE- ARE/TCS/213

## SEATING & STANDING TWISTER

### STRENGTHENS-

- a) - WAIST MUSCLE
- b) - THIGH MUSCLE
- c) - LOWER ABDOMINAL MUSCLE

CODE- ARE/DST/214

COLOR  
AVAILABILITY







## ROWER

### STRENGTHENS-

- a) - THIGH MUSCLES.
- b) - WAIST MUSCLES.
- c) - LEG MUSCLES.

CODE- ARE/RO/215

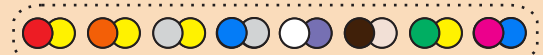
## DOUBLE SEATING TWISTER

### STRENGTHENS-

- a) - LOWER BACK.
- b) - LOWER ABDOMINAL  
MUSCLE.
- c) - LOWER BODY MUSCLES.

CODE- ARE/TST/216

COLOR  
AVAILABILITY





## STAIR CUM STEPPER

### STRENGTHENS-

- a) - THIGH MUSCLES.
- b) - WAIST MUSCLES.
- c) - LEG MUSCLES.

CODE- ARE/SCS/217



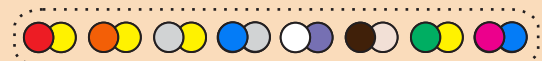
## TRIPLE STANDING TWISTER

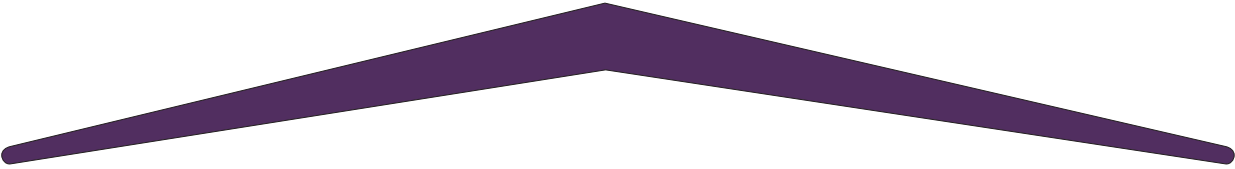
### STRENGTHENS-

- a) - LOWER BACK.
- b) - LOWER ABDOMINAL MUSCLE.
- c) - LOWER BODY MUSCLES.

CODE- ARE/TST/218

COLOR  
AVAILABILITY

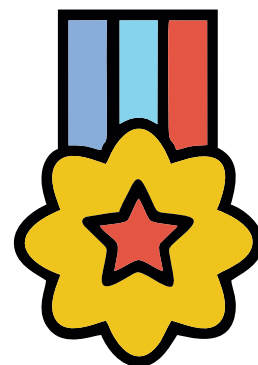




Carrying Forward the Indian Govt initiative of Open Gym, with an aim to keep people healthy and fit, we manufacture high quality gym Equipment to facilitate the urban areas with open gyms in the times to come, to meet the demand posed by urban lifestyle.

We have Installed Gym Equipment in over 1000+ sites including South Delhi Municipal Corporation, North Delhi Municipal Corporation, East Delhi Municipal Corporation, Jaipur, Ganganagar, Gurugram, Faridabad, Panipat, Karnal etc. Company also has presence in Mumbai, Raipur, Bangalore, Jabalpur & 50+ cities across the country.

Our aim is to give excellent quality in affordable price and bound to timely supply of materials. During these incredible years, we have achieved 50% growth and are aiming to make it to 75%. Our client's trust achieved through years of quality work deliverance, motivates us to aim higher & achieve unprecedented heights in near future.



We Are Working For The Betterment Of The Society By Improving Health & Fitness Facilities Across The Urban & Rural Areas.

The Organisation Is Fully Committed To Ensure Modern Open Gym Facilities Across The Cities. Our Gym And Play Equipment Are Functional In Local Parks, Schools, Societies, Corporate Offices & Community Centres.



# WALL OF FAME



SITE - SDMC



SITE - NDMC



SITE - SDMC



SITE - NDMC



SITE - EDMC



SITE - EDMC



SITE - EDMC





SITE - NDMC



SITE - SDMC



SITE - SDMC



SITE - EDMC



SITE - EDMC



SITE - SDMC



SITE - SDMC



SITE - NDMC





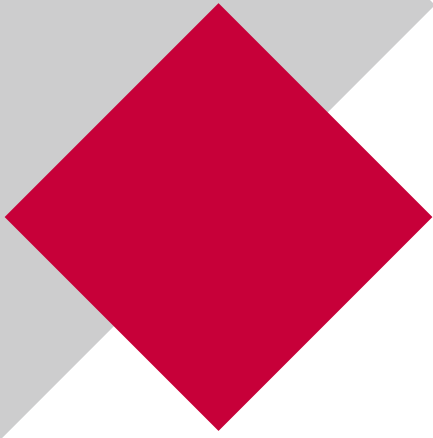
**PORTABLE**  
**& MOBILE TOILETS**

**PRODUCTS**



**CUBOIDAL DESIGN  
PORTABLE TOILET**

\* Available in both Indian,  
Western Commode.



## 2 in 1 PORTABLE TOILET

### This includes:

- \* One Urinal & one Western commode.
- \* One Wash Basin.





**PRODUCTS**



**CUBOIDAL DESIGN  
PORTABLE TOILET**

\* Available in both Indian,  
Western Commode.



## MOBILE TOILET VAN

### FRP 10 SEATER

- \* This includes 10 cabins, 5 per side.
- \* This product is manufactured so that it can accommodate 10 people at 1 point at time.



**PRODUCTS**



## **MOBILE TOILET VAN**

### **FRP 6 SEATER**

- \* Separate seats for Male & Female.
- \* Wash Basin attached for better hygiene.

PRODUCTS



## STATIONARY TOILETS

### 10 SEATER STATIONARY TOILETS

- \* Ideal for construction sites.
- \* Robust framing makes them long lasting product.

## FRP TANKS

We are manufacturing Bio-Digester tanks based on DRDO technology and processes.

### Others types of tank:

- \* Bio Digester tank.
- \* FRP Sludge Tanks.
- \* Tanks for STPs, WTPs.
- \* FRP Fuel Tanks.
- \* Oil storage Tanks.
- \* Acid Tanks.
- \* Water Tanks.



Bio Digester Tanks and Processing Tanks for STPs

# AREAS & PROJECTS



Greater Noida  
Industrial Development Authority



Noida  
Development  
Authority

